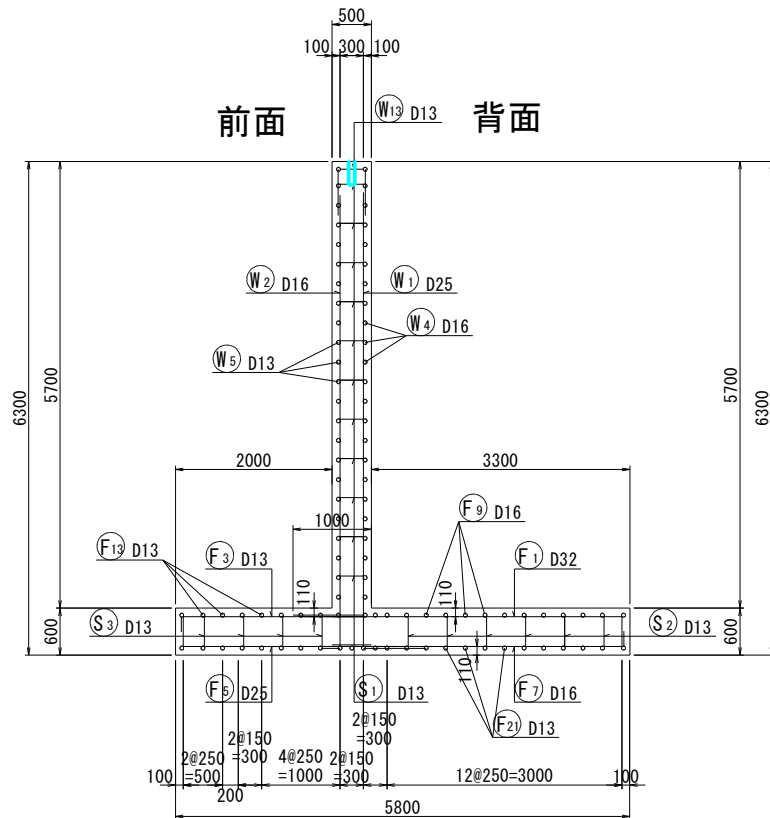
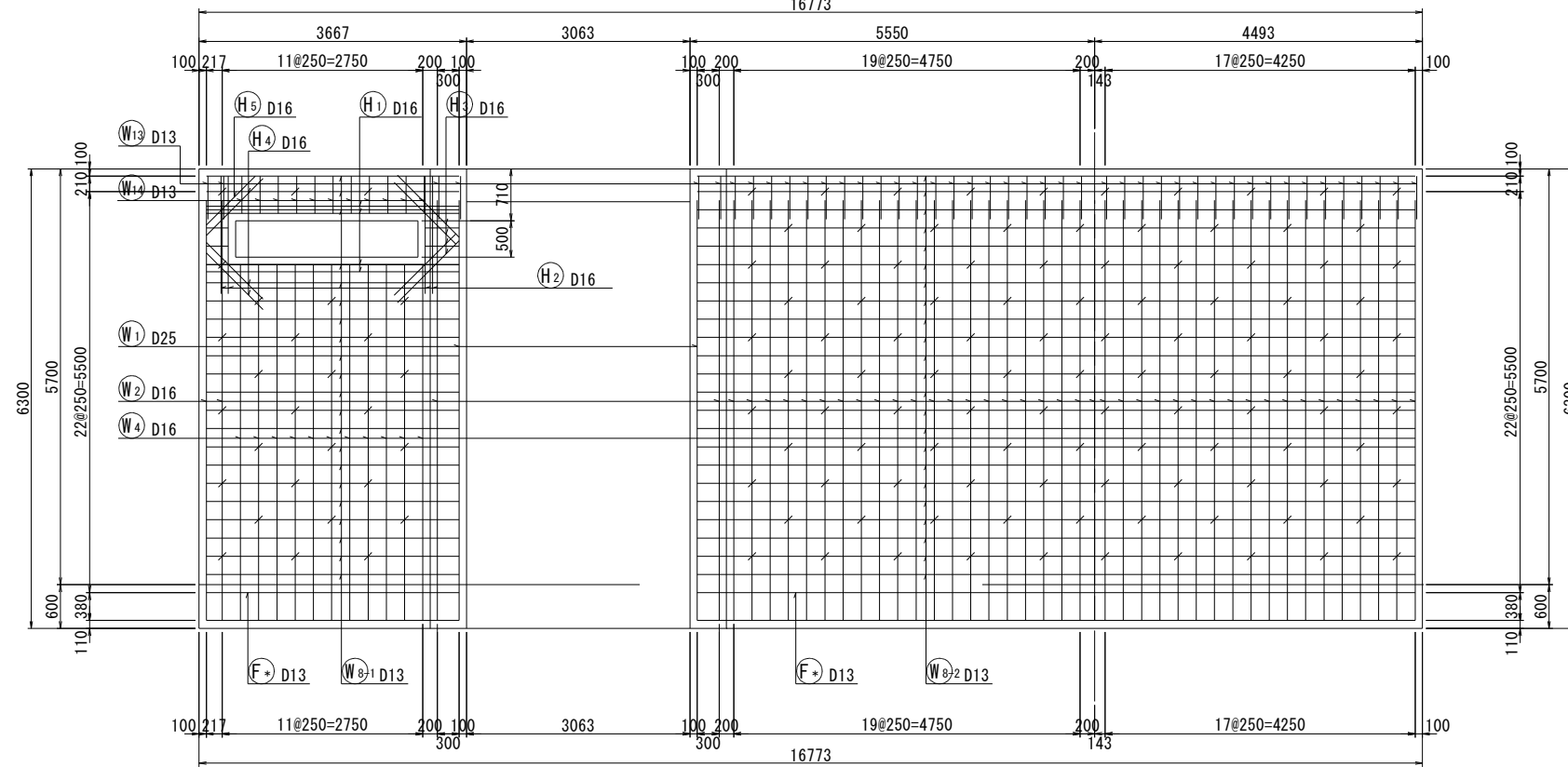


S=1 : 50
(1 : 100)

前面 W13 D13 背面



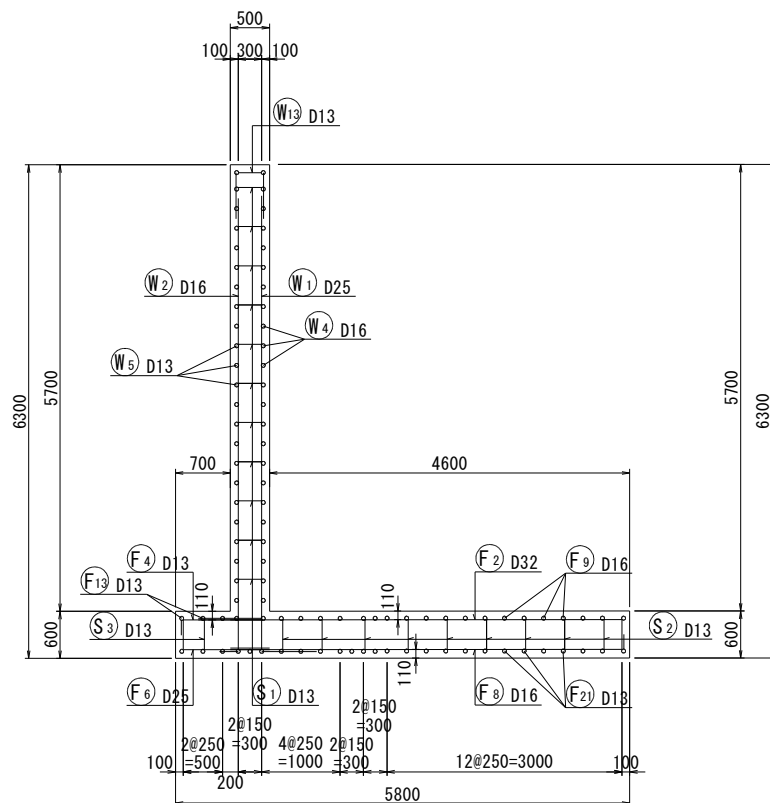
1677:



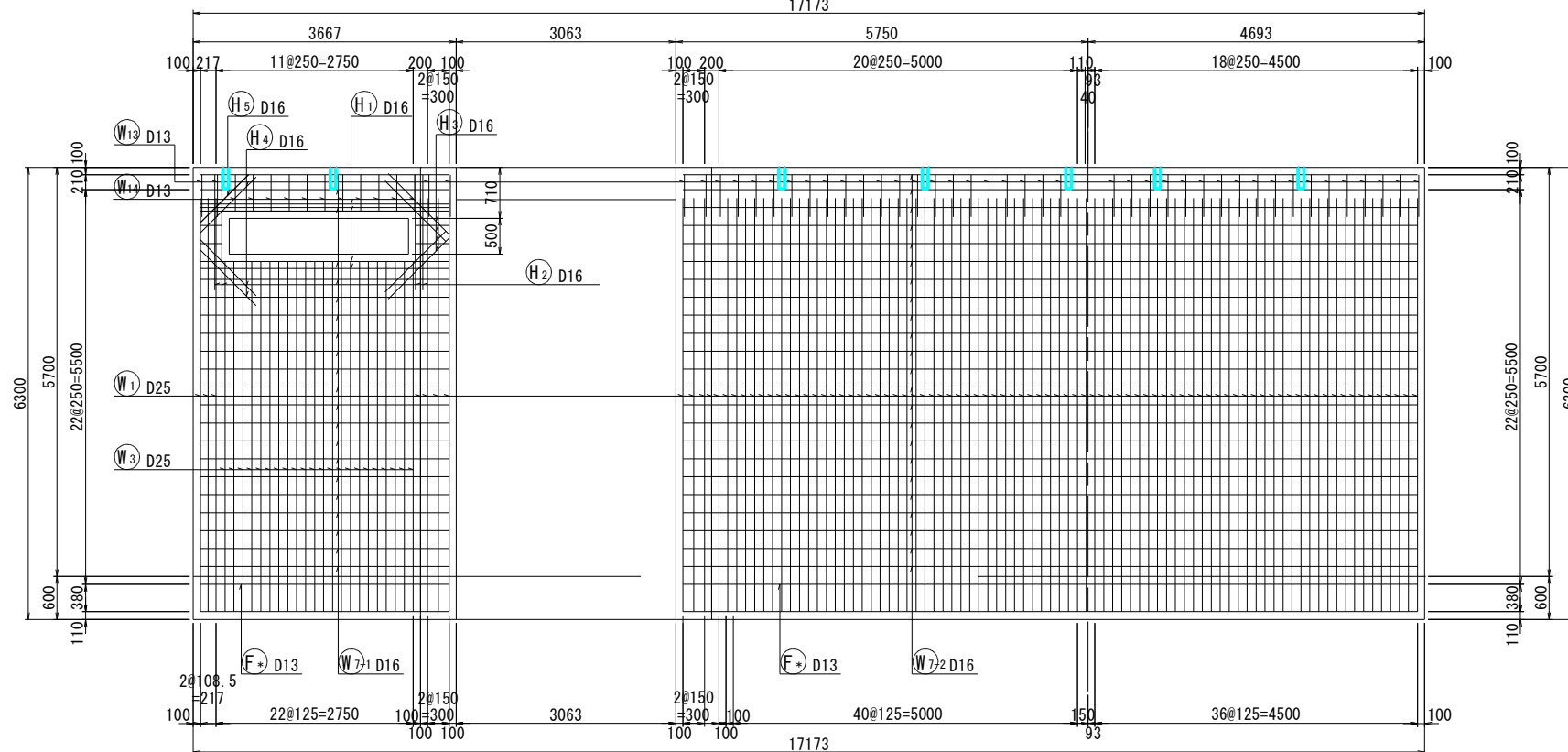
The diagram shows a mechanical assembly with a horizontal base and a vertical rod. The base is supported by two vertical columns. A horizontal rod is attached to the vertical rod. The following labels are present:

- W_3 D13: A vertical force acting upwards on the top of the vertical rod.
- W_2 D16: A horizontal force acting to the left on the vertical rod.
- W_1 D25: A horizontal force acting to the right on the vertical rod.
- F_3 D13: A vertical force acting downwards on the left end of the horizontal rod.
- F_1 D32: A vertical force acting downwards on the right end of the horizontal rod.
- F_5 D25: A vertical force acting upwards on the left support of the base.
- F_7 D16: A vertical force acting upwards on the right support of the base.

7 - 7



17173



事業名	浜松都市計画事業 浜北中央北土地区画整理事業		
工事名	令和7年度 調整池築造工事(北側工区・その1)		
道路 橋梁	名		
工事箇所	浜松市 浜名区 道本 地内		
図名	調整池10ブロック配筋図(1)		
図面番号	全 30 枚ノ内 16	縮尺	S=1:50 (1:100)
設計課		設計月日	
浜松市浜北中央北土地区画整理組合			